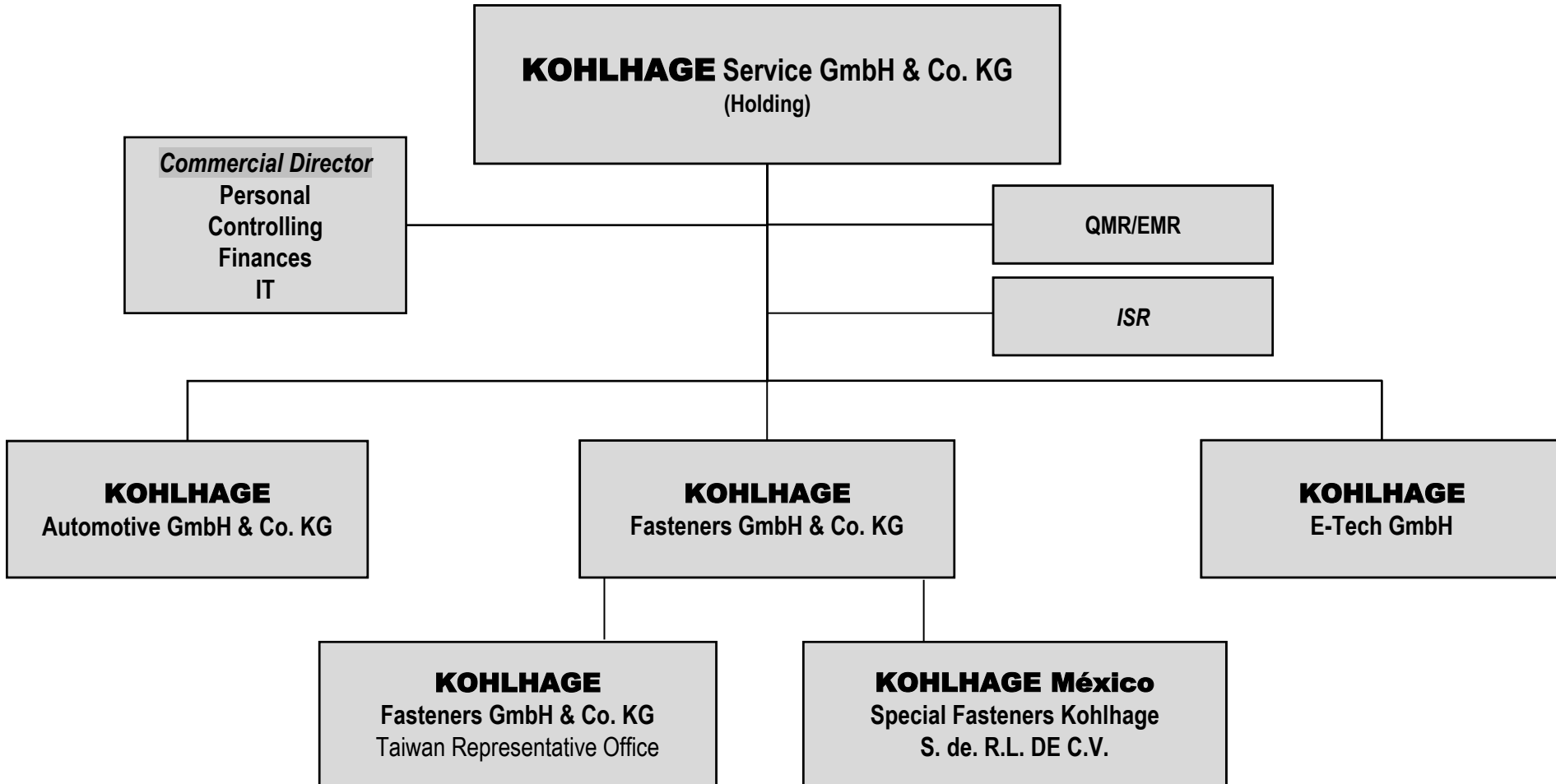
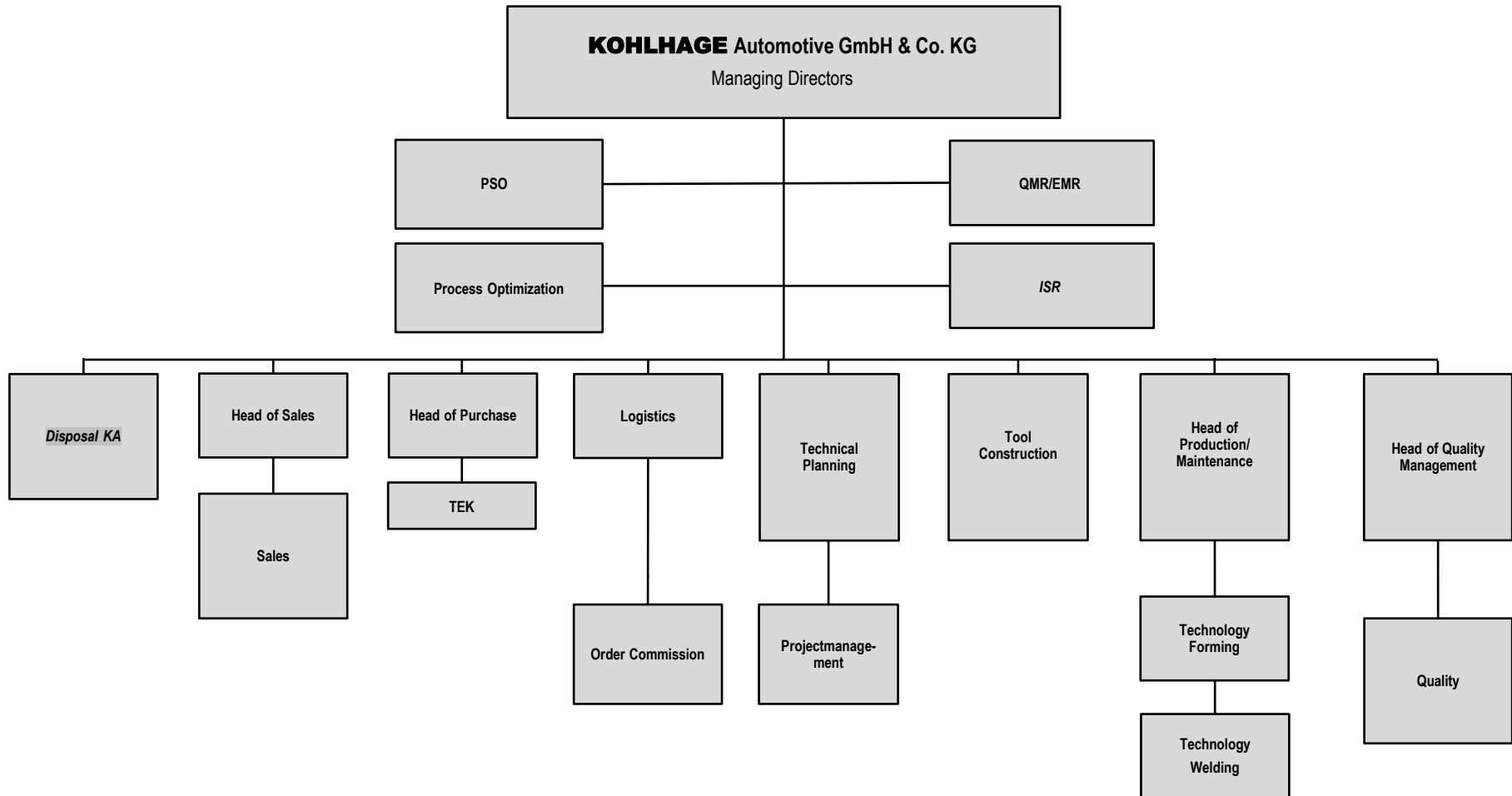


Organization Chart

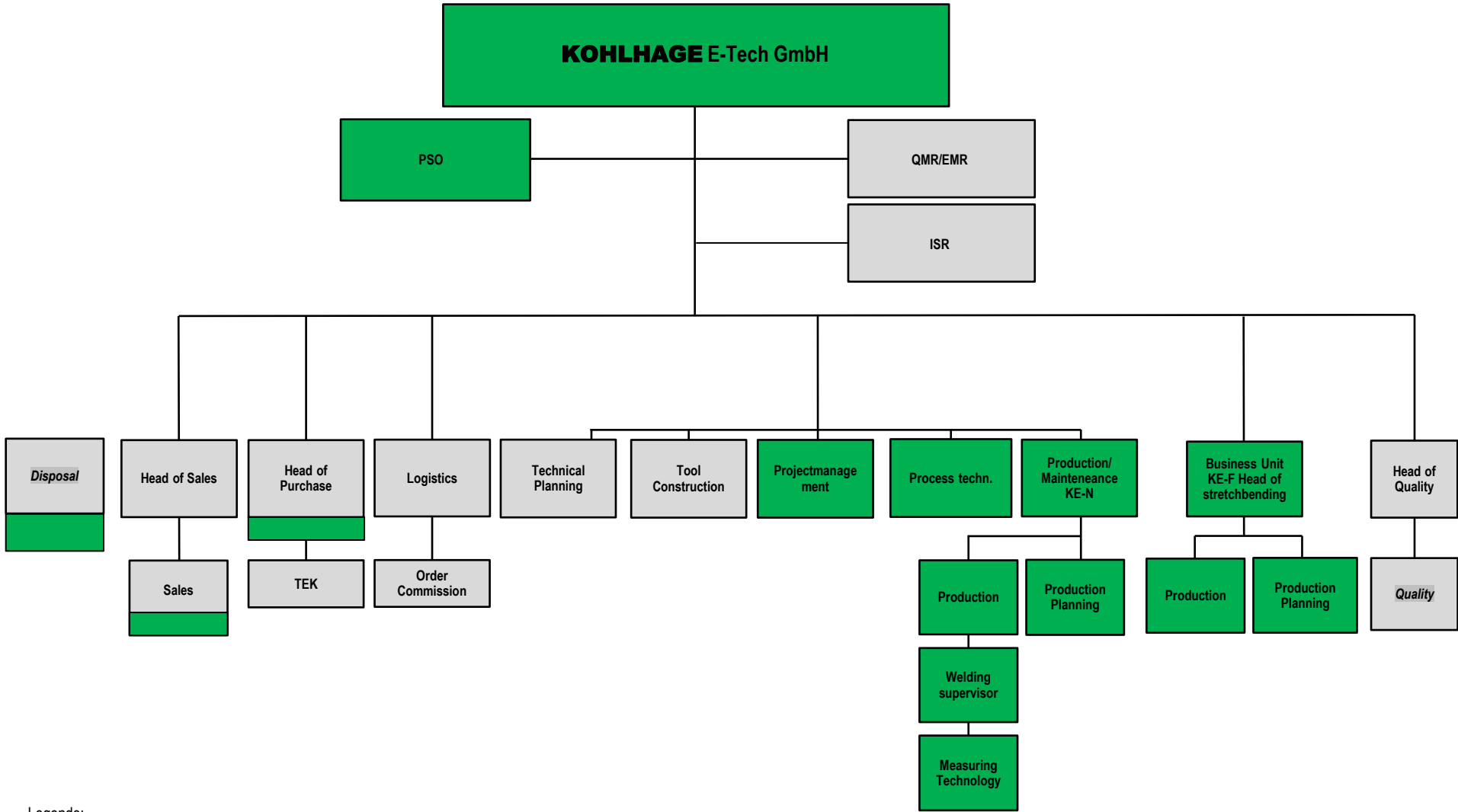


Organization Chart



TL = Teamleitung

Organization Chart

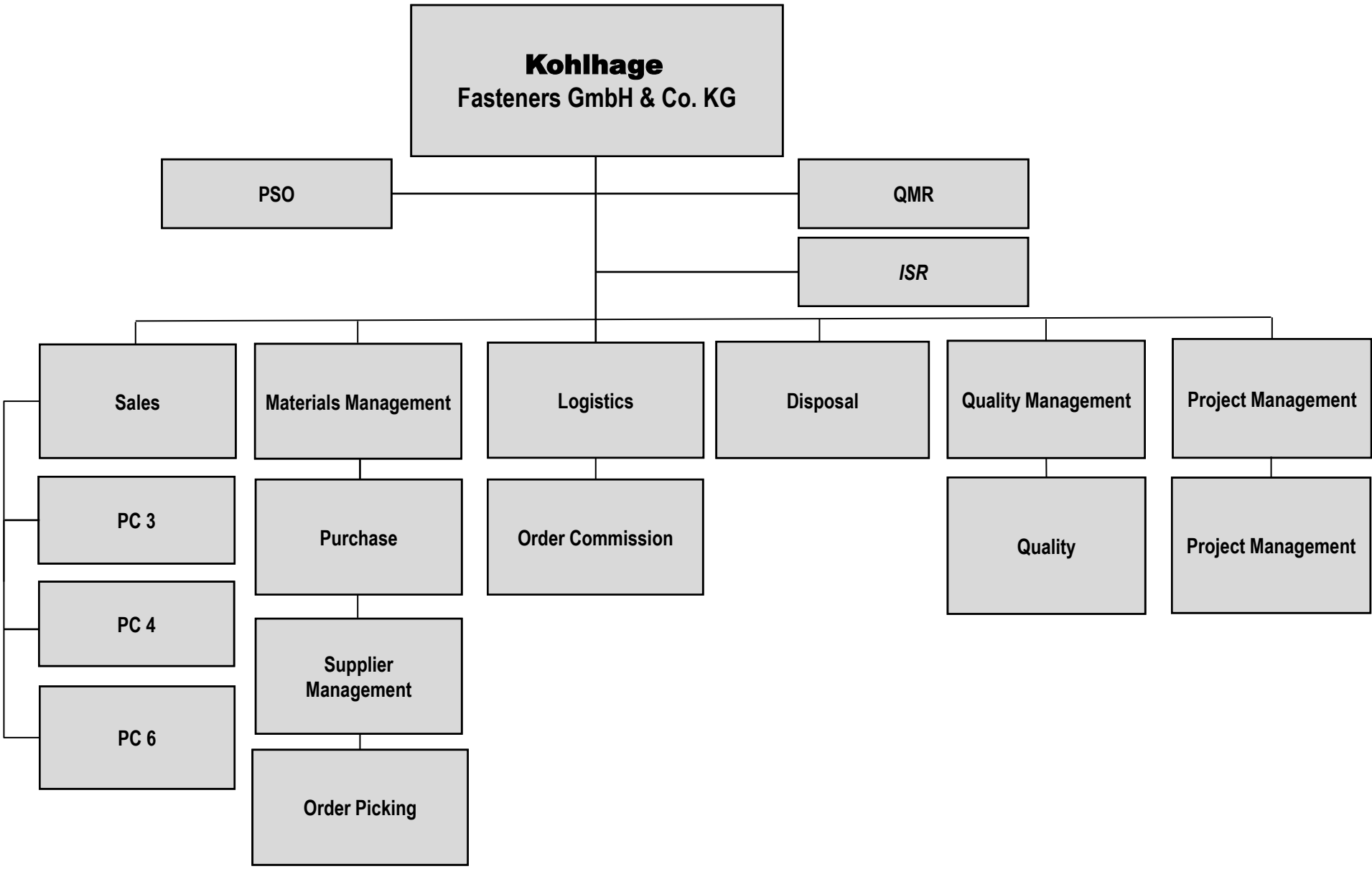


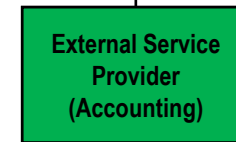
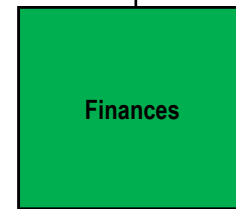
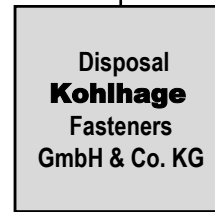
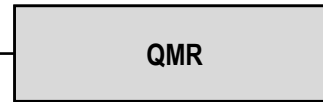
Legende:

- Process Litigation by Automotive / Support Function
- Personnel E-Tech

TL = Team Leader KE-N = Neuenrade KE-F = Finnentrop BU = Business Unit Streckbiegen PC9

Organization Chart





Legende:

Kernprozesse

Externe Dienstleistung durch KOHLHAGE Fasteners GmbH & Co. KG (Supportfunktion)